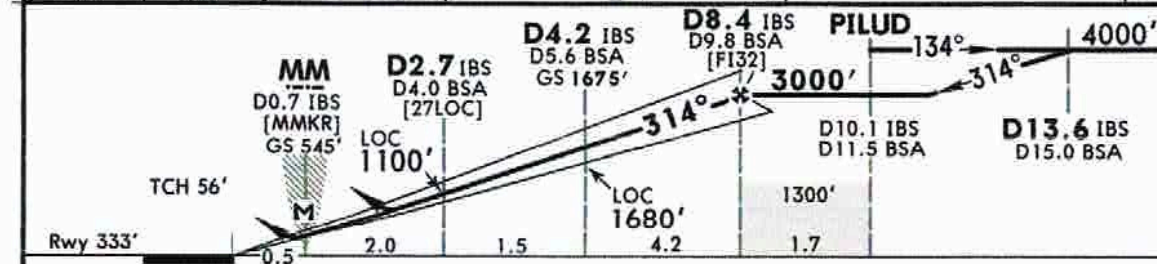
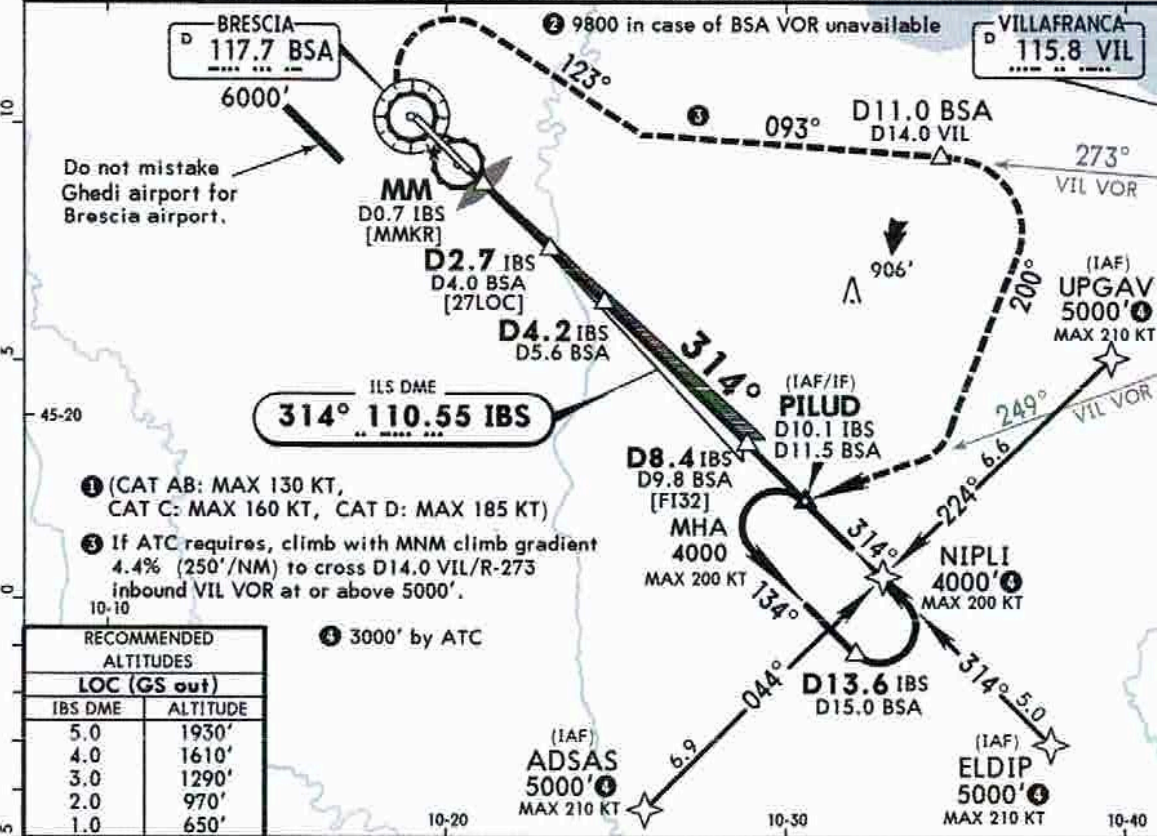
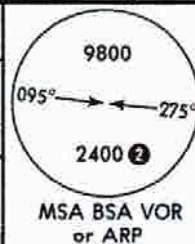


**LIPO/VBS
MONTICHIARI**

JEPPESEN
19 JUL 19 (11-1)

**BRESCIA, ITALY
ILS Rwy 32**

VERONA Approach (R) 135.9 124.250 118.550			MONTICHIARI Tower 119.4 122.1		
LOC IBS 110.55	Final Apch Crs 314°	GS D4.2 IBS 1675' (1342')	ILS DA(H) Refer to Minimums	Apt Elev 356' Rwy 333'	
MISSED APCH: Proceed on 314° climbing to 4000'. At 800' turn RIGHT ① on 123° to join R-273 inbound VIL VOR . At D11.0 BSA/D14.0 VIL turn RIGHT (MAX 185 KT) on 200° to join and follow R-249 VIL to PILUD holding.					
Alt Set: hPa		Rwy Elev: 12 hPa		Trans level: By ATC	
1. VOR DME REQUIRED.		2. Missed Approach procedure is partially carried out outside controlled airspace.			



Gnd speed-Kts	70	90	100	120	140	160	ALSF-II PAPI PAPI	Refer to Missed Apch above
ILS GS or LOC Desc Angle 3.00°	372	478	531	637	743	849		
MAP at MM/D0.7 IBS								

Standard						STRAIGHT-IN LANDING RWY 32			LOC (GS out)			CIRCLE-TO-LAND			
Missed apch climb grad mim 5.0%						Missed apch climb grad mim 2.5%			CDFA			Not authorized Southwest of rwy			
DA(H) A: 545' (212') C: 565' (232') B: 557' (224') D: 575' (242')						DA(H) A: 545' (212') C: 613' (280') B: 557' (224')			DA/MDA(H) 750' (417')						
FULL		TDZ or CL out		ALS out		FULL		TDZ or CL out		ALS out		Max Kts	MDA(H)	VIS	
A						RVR 550m	RVR 550m	RVR 1200m	RVR 1200m	RVR 1500m	100	890' (534')	1500m		
B	RVR 550m	RVR 550m				RVR 600m	RVR 600m	RVR 1300m	RVR 1200m	RVR 1500m	135	950' (594')	1600m		
C			RVR 1200m							RVR 1900m	180	1130' (774')	2400m		
D			RVR 1300m			NOT APPLICABLE				RVR 1900m	205	2030' (1674')	3600m		

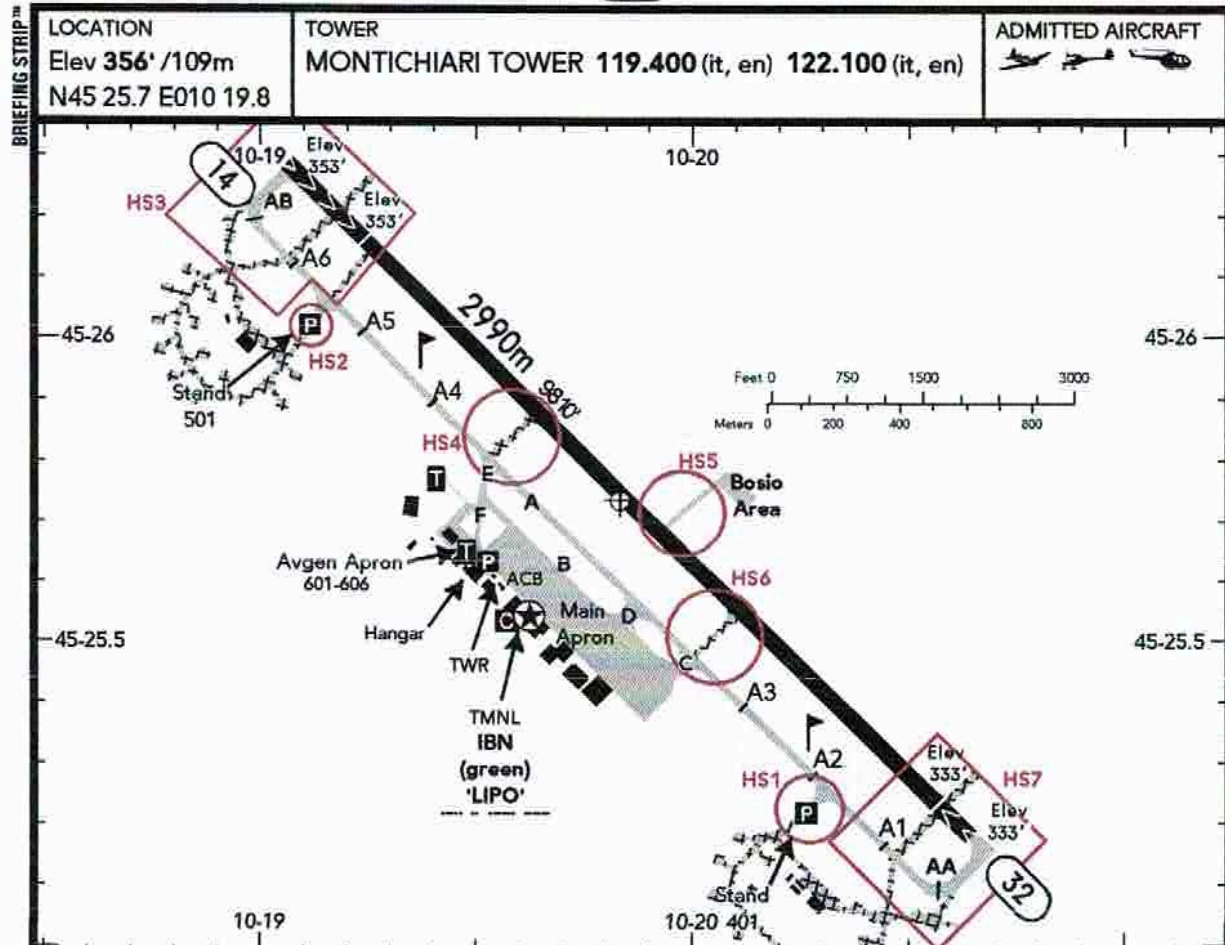
CHANGES: Circling minimums. © JEPPESEN, 1999, 2019. ALL RIGHTS RESERVED.



LIPO
MONTICHIARI

BRESCIA
ITALY

05 FEB 21 **(19-2)**



IBN - ALS - PAPI 14 (3.0°), 32 (3.0°) - THRL - RL - RCLL - TWYL - APRON.

RWY No	Dimension (m) - Surface	TORA (m)	LDA (m)	Strength	Lights
14 (134°)	2990 x 45 Asphalt	2900	2600	PCN 101/F/A/W/T	
32 (314°)		2990	2795		

NOTE: Refer to Verona (LIPX) Area Information.

CAUTION: Pilots should pay attention not to confuse this AD with MIL AD Ghedi, which has similar RWY configuration (13/31), located 2.5 NM W of AD Brescia (Montichiari).

In order to receive information about IFR traffic within Montichiari ATZ, VFR holding point DESENZANO (POE1) has been established.

Arriving VFR flights shall be instructed by VERONA APPROACH to contact MONTICHIARI TOWER.

VFR activity of AD within CTR 1 shall be coordinated with ATC.

RWY Incursion Hot Spots

- HS1 - Entrance to remote stand 401.
- HS2 - Entrance to remote stand 501.
- HS3, HS4, HS6, HS7 - Closed TWYs.
- HS5 - Bosio Area (paved surface from/to Bosio Motori under special regulation).

Traffic Circuit

Only E of RWY at MAX 1000' AGL.
RWY 32 RH traffic circuit.

Ground Movement

Stands 602-604 AVBL to ACFT with MAX wingspan 12m. Taxilane FA AVBL to ACFT with MAX wingspan 16m. Stand 606 AVBL to ACFT with MAX wingspan 14m.

Stand 605: ACFT wingspan up to but not including 12m - self maneuvering. ACFT wingspan BTN 12m up to but not including 16m - push back out.

Brescia Aeroclub ACFTs departing from GA Apron shall hand over notification "Notifica di volo" at operations office to obtain "released status".

Radio Failure on Manoeuvring Area

Departing ACFT: ACFT is to continue taxiing along assigned route, paying attention to avoiding every deviation, until reaching its correspondent clearance limit position, where it shall wait for the follow-me car to go back to the parking Apron.

Arriving ACFT/Aborted TKOF: ACFT is to vacate the RWY and the sensitive area on TWY AB to proceed on TWY A until TWY D, and wait for the follow-me to proceed to the parking stand.

